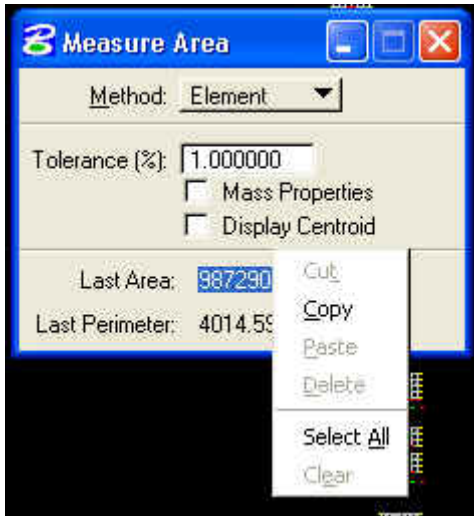


MicroStation

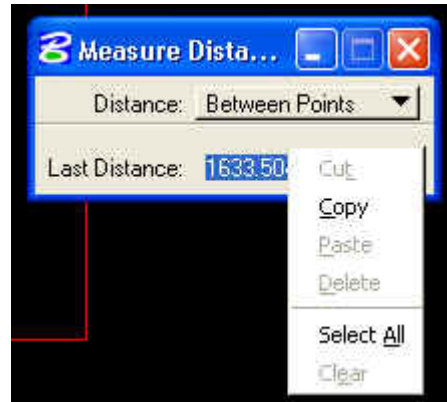
Using Measured Data

Did you know that you can highlight a measured distance from the Tool settings Box, *Right Click* on the measurement and then do a *Copy* and *Paste* into another document. Linear measurements give you the working unit label, but Square Area units don't seem to. The Area unit also doesn't seem to recognize the design coordinate readout. This is a bug that is being looked into.

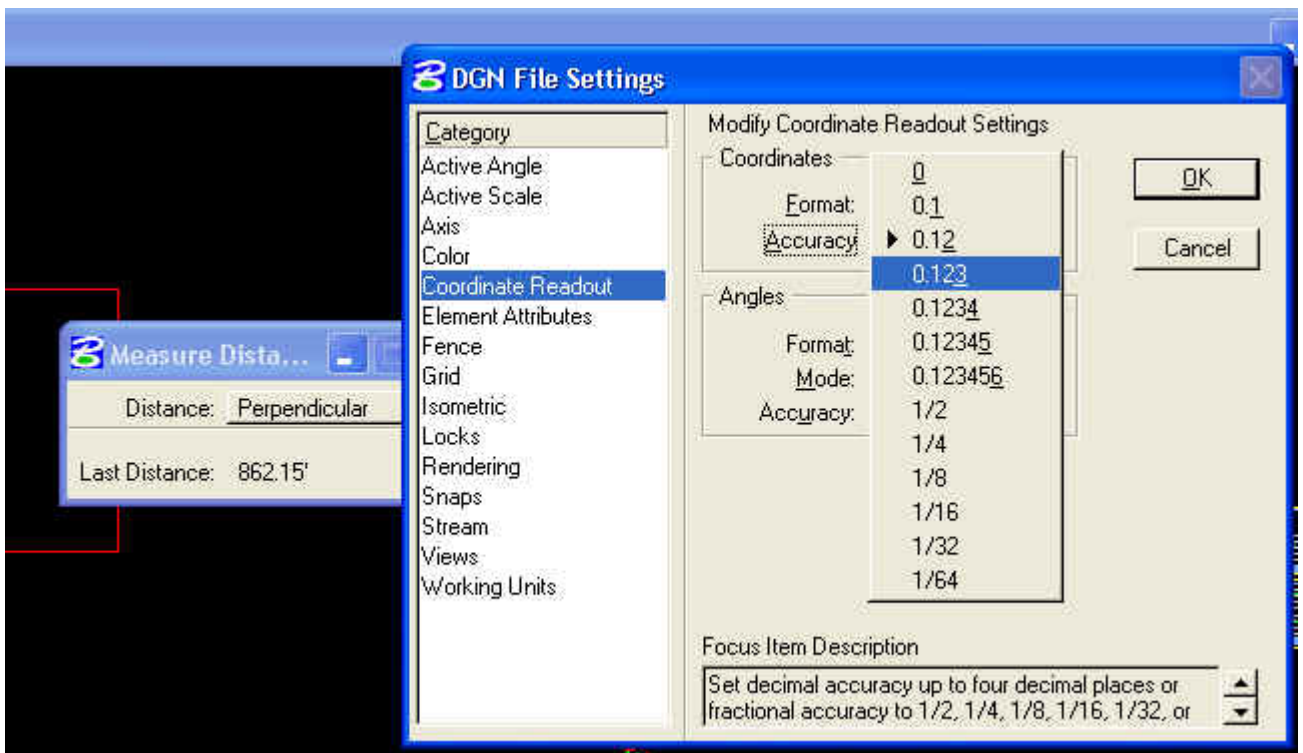
The measurement can be copied into an Excel table and linked into a document. The measurement doesn't have to be written down, merely pasted into a spreadsheet, which allows less room for error. [Click Here](#) to view more.



Measured Area



Measured Distance



Settings > Design File > Coordinate Readout to change the unit measured distance readout.